



## Product Description

GZ-WB 5nL3 is a high performance, high speed outdoor long range wireless bridge, it has long transmission distance, strong penetration ability, strong anti-interference ability and so on.

## Features

- ❖ Built-in 15dBi dual-polarized directional antenna, up to 3km
- ❖ Support non-standard frequency points, spread spectrum to 4.9-6.1GHz
- ❖ Support 5, 10MHz narrowband working bandwidth
- ❖ TDMA intelligent dynamic polling protocol
- ❖ Supports ATPC power control
- ❖ VLAN support
- ❖ IPv6 support



## Specification

Model	GZ-WB 5nL3
CPU	AR9344
Flash	16MB
DDR	64MB

# 300Mbps 5.8Ghz AP Bridge WiFi Router (GZ-WB 5nL5) Amplifier 5km CPE Bridge Booster Extender

Frequency band	5.150GHz～5.850GHz				
5G WIFI Protocol	802.11 a / n				
Antenna	Flat plate directional antenna gain: 12dBi				
Rates	900Mbps				
5G Wireless power	802.11a	54M	17±2dBm	6M	19±2dBm
	802.11n HT20	MCS7	16±2dBm	MCS0	18±2dBm

# 300Mbps 5.8Ghz AP Bridge WiFi Router Amplifier 5km CPE Bridge Booster Extender

(GZ-WB 5nL5)



	802.11n HT40	MCS7	15±2dBm	MCS0	17±2dBm
	802.11AC	MCS9	14±2dBm	MCS0	16±2dBm
5G Receiving sensitivity	802.11a	54M	-68dBm	6M	-86dBm
	802.11n HT20	MCS7	-68dBm	MCS0	-86dBm
	802.11n HT40	MCS7	-65dBm	MCS0	-83dBm
	802.11ac	MCS9	-55dBm	MCS0	-73dBm
5G EVM	802.11a_54M: ≤-25 dB; 802.11n_MCS7: ≤-28 dB; 802.11ac_MCS9: ≤-32dB				
Frequency offset (ppm)	±20ppm				
Port (WAN)	1*10/100M self-adaptation WAN Port, Support 24V POE				
Port (LAN)	1*10/100M self-adaptation LAN Port				
Key	Reset Key (Hold down for 6~10s to restore factory default Settings)				
Status indicator	System light、WAN light、LAN light、WiFi light、Signal strength lamp*4				
Power	PoE 24V/1A				
Max Consumption	< 8W				
Product size	237mm×80mm×57mm				
Weight	0.24kg				
Working environment	Operating Temperature: -30°C to 55°C; Storage Temperature: -40°C to 70°C; Humidity: 5%~95% (Condensation free)				
Protection class	IP65				
ESD	Air discharge +/-8kV, Contact discharge +/-6kV				
Surge	Common mode 2kV, Differential mode 1kV				

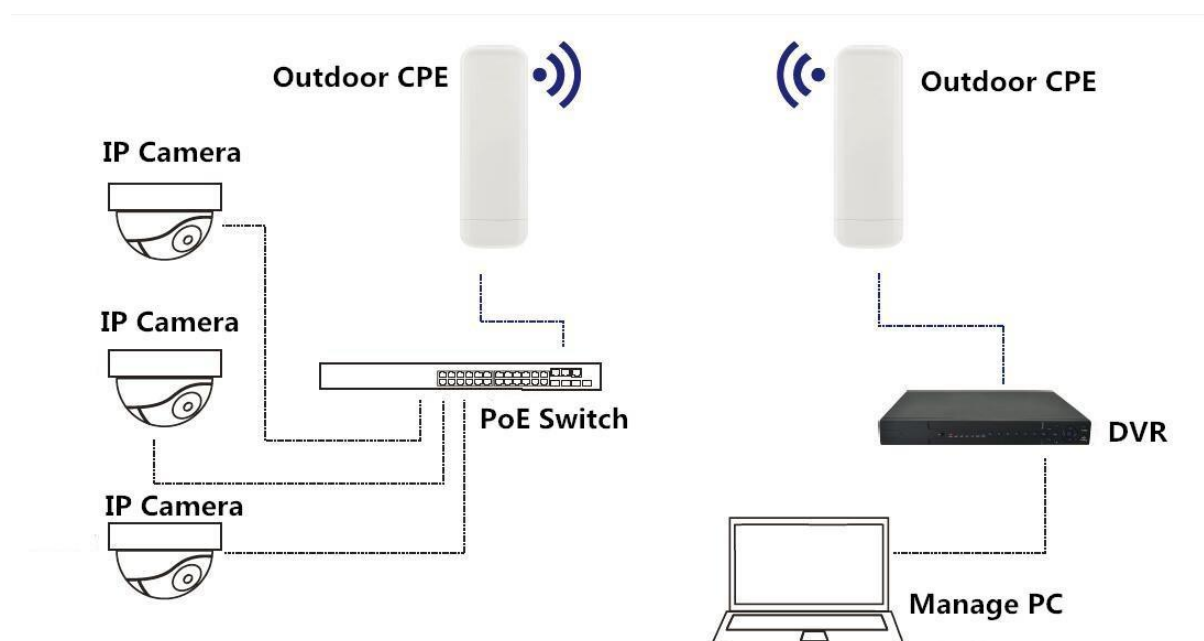
## Software

Wireless mode	AP (Auto WDS), AP (TDMA3), 站点 (WDS/TDMA3), 站点 (ARPNAT)
Wireless technology	智能动态轮询, 自动信道选择, 自动调制方式选择, 发射功率自动控制(ATPC)
Wireless security	WPA/WPA2 个人加密, WPA/WPA2 企业加密, WACL, 用户隔离
Wireless QoS	TDMA 实现 4 队列优先
Network mode	IPv4 IPv6 桥接
Network technology	支持 VLAN、VLAN 透传
WAN Protocol	静态 IP, DHCP 客户端
Service	DHCP 服务, SNMP 服务, NTP 客户端, 路由跟踪, ping 看门狗
Management	HTTP(S) GUI, SSH, SNMP read, WNMS, Telnet

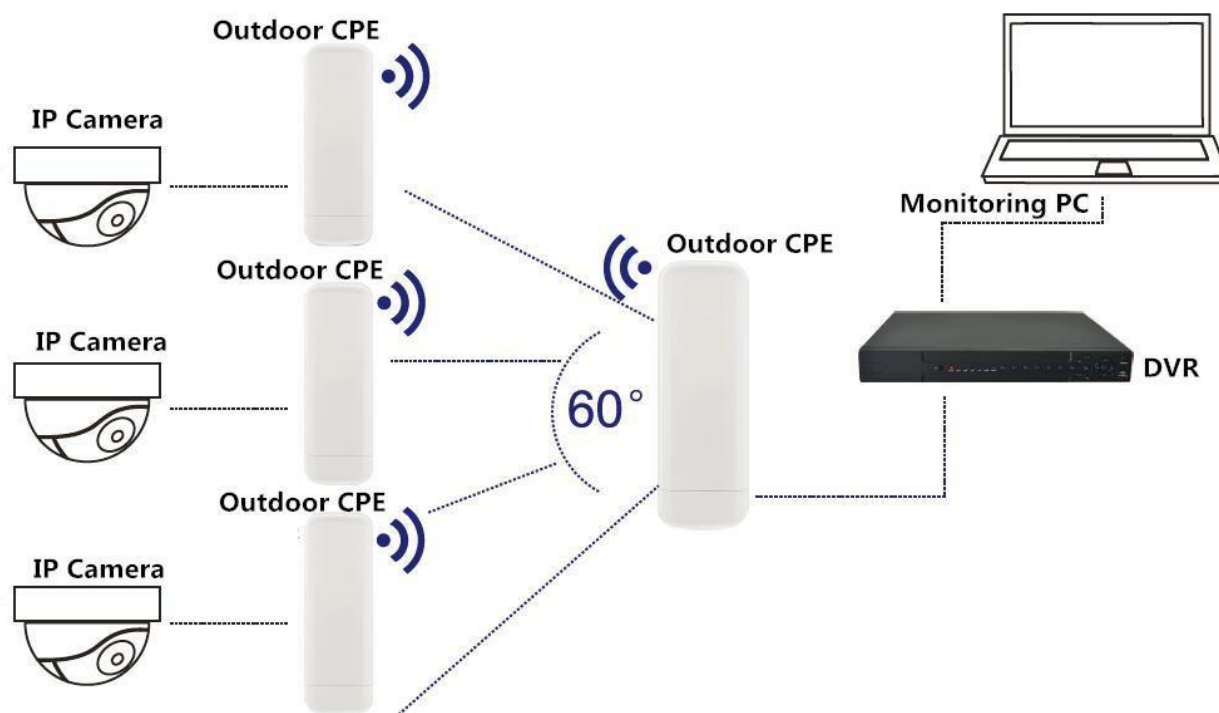
Tool	站点勘测，连接测试，天线校准
------	----------------

## Working Diagram

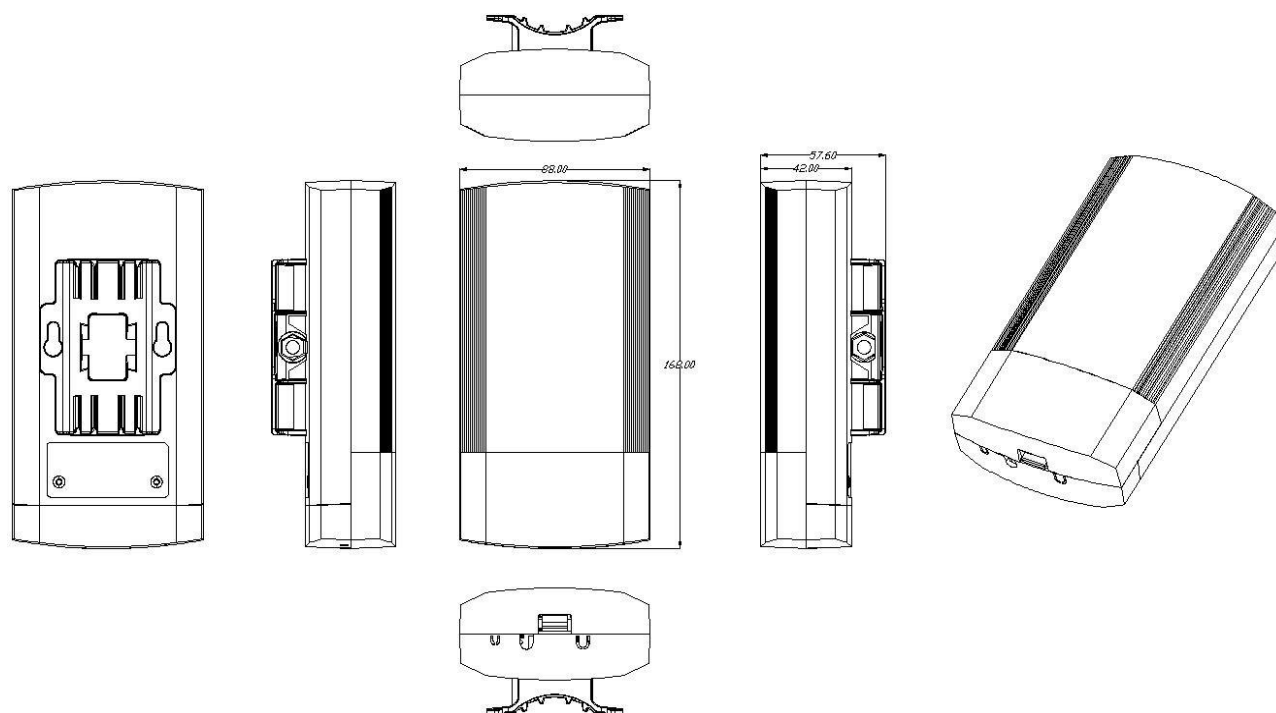
### Point to Point connection



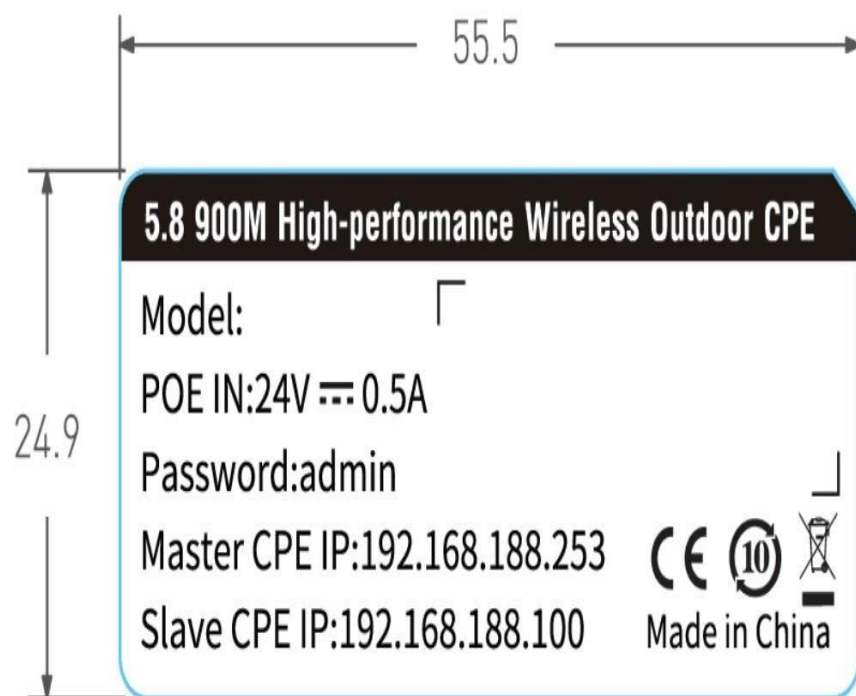
### Point to Multi-Point connection



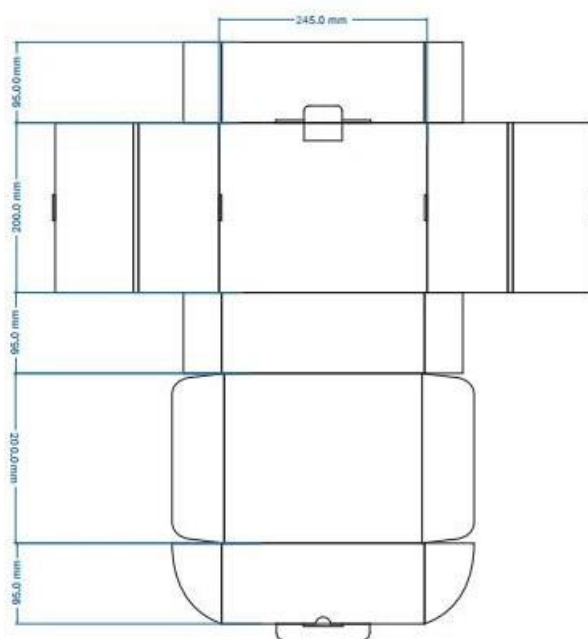
## Product Structure:



## Product Sticker



## Packing Box

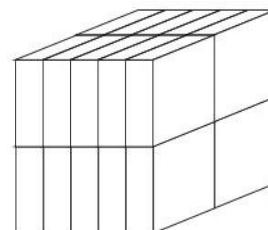


## Carton box picture

**Shenzhen GZCOM Communication Co., Ltd.**

Email: [sales@gzcomm.com](mailto:sales@gzcomm.com)

<https://www.gzcomm.com>



GZCOM reserves the right to make changes to the products or information contained herein without notice. No liability is assumed as a result of their use or application. No rights under any patent accompany the sale of any such products or information.

Published by Shenzhen GZ Communication Co., Ltd.

Copyright ©GZCOM

All Rights Reserved