



Product Description

GZ-AP1200F is the 1200Mbps high power industrial use Outdoor wireless access point with the next generation 802.11ac Wi-Fi standard, support 2x2 MU-MIMO technology, it is dual band, 2.4GHz(300Mbps) and 5GHz(900Mbps), 100M WAN/LAN port, the fast Ethernet data rate and clear frequency make 100+ end users can access into it to enjoy seamless HD movies, streaming, online gaming, wireless security and other bandwidth-intensive tasks.

ABS weather-proof case

GZ-AP1200F with ABS waterproof, dust proof and sunscreen shell, avoid the damage from dust, rainy weather. Meantime, it adaptive to various environment, the maximum working temperature can be at -40°C to 55°C. Suit for any country.

High Power, 5dBi omni antenna, more Wi-Fi Range

Designed in two line Power Amplifier on PCB board, the power can be 300mW high power, build in 5dBi omni Wi-Fi antenna, outdoor Wi-Fi range up to 100 meters.

Power over Ethernet

GZ-AP1200F has integrated active Power over Ethernet (PoE), for easy installation and lower cost. So it can be installed in areas where power outlets are not readily available, eliminating the mess of altering existing network infrastructure. Pls note, the default is 24V IEEE 802.3at PoE, 24V Passive PoE is possible by change PCB board.

Beamforming, DFS, Airtime Fairness, Band Steering, OFDM support

GZ-AP1200P support many functions like Beamforming, DFS(Dynamic Frequency Selection), Airtime Fairness, Band Steering (5G Prior), OFDM(Orthogonal Frequency Division Multiplexing), RF Power adjustable to improve the performance and Wi-Fi stability.

Access Controller System & Cloud Management System

Work with WLAN controller in wireless AP operation mode,easily access advanced network settings through PC, like AP status monitor, change IP address, ESSID, Channel, Password, upgrade firmware, backup and restore....

Then work with Cloud Management System, easy to do central and remote management, advertisement and multi authentication make this device more professional in Wi-Fi Projects.

Main Features

- ❖ Comply with IEEE 802.11ac/b/g/n, dual band, 1200Mbps Data Rate
- ❖ 1*10/100Mbps WAN Port, 1*10/100/1000Mbps LAN Port
- ❖ 300mW high power, Qualcomm Chipset, 16M Flash, 64M DDR2 RAM, more user, more stable
- ❖ Support 24V active PoE, work with IEEE 802.3af standard PoE switch or 48V PoE adapter.
- ❖ Support SSID broadcasting, Multi SSID up to 8 (4 SSID in 2.4GHz, 4 SSID in 5GHz), support tag VLAN based on SSID to protect the whole data safety.
- ❖ Support Gateway (PPPOE, static IP, dynamic IP) , Wireless AP, Repeater, WISP operation mode
- ❖ With function of firewall, IP filter, URL filter and MAC filter
- ❖ Comply with IEEE 802.3az standard, RF power adjustment and frequency analyzer for better application in different environment

WiFi 5 11ac 1200Mbps Dual band 24V POE Wireless Outdoor AP (GZ-AP1200F)



❖ Support DDNS, VPN pass through, Port forwarding and DMZ host

Hardware Spec.

Model	GZ-AP1200F				
CPU	MT7628DAN+ MT7613BEN				
Flash	8MB				
DDR2	64MB				
2.4G Frequency	2.4GHz ~ 2.484GHz				
2.4G Protocol	802.11 b / g / n				
5G Frequency	5.150GHz~5.850GHz				
5G Protocol	802.11 a / n / ac				
Antenna	2*5dBi				
Data Rate	2.4G 300 Mbps MIMO 2*2, 5G 866Mbps MIMO 2*2				
2.4G TX Power	802.11b	11M	19±2dBm	1M	20±2dBm
	802.11g	54M	17±2dBm	6M	19±2dBm
	802.11n HT20	MCS7	16±2dBm	MCS0	18±2dBm
	802.11n HT40	MCS7	16±2dBm	MCS0	18±2dBm
5G TX Power	802.11a	54M	17±2dBm	6M	19±2dBm
	802.11n HT20	MCS7	16±2dBm	MCS0	18±2dBm
	802.11n HT40	MCS7	16±2dBm	MCS0	18±2dBm
	802.11ac HT80	MCS9	15±2dBm	MCS0	17±2dBm
2.4G Receiving Sensitivity	802.11b	11M	-85dBm	1M	-94dBm
	802.11g	54M	-73dBm	6M	-90dBm
	802.11n HT20	MCS7	-71dBm	MCS0	-89dBm
	802.11n HT40	MCS7	-68dBm	MCS0	-86dBm
5G Receiving Sensitivity	802.11a	54M	-73dBm	6M	-90dBm
	802.11n HT20	MCS7	-71dBm	MCS0	-89dBm
	802.11n HT40	MCS7	-68dBm	MCS0 .	-86dBm
	802.11ac HT80	MCS9	-56dBm	MCS0 .	-81dBm
2.4G EVM	802.11b:≤-10 dB ;802.11g: ≤-25 dB ;802.11n: ≤-28 dB				
5G EVM	802.11a: ≤-25dB ;802.11n: ≤-28 dB ;802.11ac: ≤-32 dB				
ppm	±20ppm				
WAN	1*10/100 RJ45, support 24V PoE				
LAN	1*10/100 LAN				
DC	12V/1A				
POE(WAN)	24V POE				
Reset	Reset to factory settings by pressing 6-10 seconds				
Indicators	WAN, LAN, SYS, 2.4G_WiFi, 5G_WiFi.				

WiFi 5 11ac 1200Mbps Dual band 24V POE Wireless Outdoor AP (GZ-AP1200F)



Power	<7W
Dimension	196mm*86mm*40mm
Weight	0.4kg
Temperature	Working: -30°C to 55°C;Storage: -40°C to 70°C;Humidity: 5%~95%(Non-Condensing)
Protection Grade	IP65
ESD	Air:±8K, Touch:±6K
Electrical Surge	Common Mode: 4K, Differential Mode: 2K

Firmware Specification

Working Mode	Gateway, AP, Repeater, WISP
Wireless Functions	Multiple SSID functions: 2.4GHz: 4; 5.8GHz: 4.
	Support SSID hidden
	Support seamless roaming, 802.11kvr standard.
	Support 5G Prior for a faster Ethernet.
	Wireless Security: Open, WPA, WPA2PSK_TKIPAES, WAP2_EAP, 802.1x
	Support MAC filter
	Support Wi-Fi time on/off to save energy
	Support client isolation to improve the wireless stability
	Support RF power adjustable, adjust the RF power based on environment.
	Support user quantity limited, Max 64 users to access each band.
Networking Function	VLAN settings
	Cloud access support in gateway mode
Device Management	Back-up the configuration
	Restore the configuration
	Reset to factory default
	Reboot the device: including time reboot or reboot immediately
	Admin management password modify
	Firmware upgrade
	System log
	Support firmware GUI web management, AC controller management, remote management and cloud management
Protocols	IPv4

Software

Page	Working mode: Fat AP mode and Thin AP mode
	Wireless AP download rate, wireless AP upload rate, running time
	Device information, device description, Intranet information, WIFI information
Support mode	Gateway mode: The device connects to the WAN through the WAN port and uses a static IP address,DHCP, or PPPOE to access the Internet
	Relay mode: In this mode, the device covers the wireless network signal to other clients or devices, and connects to other routers using an Ethernet cable to access the WAN

WiFi 5 11ac 1200Mbps Dual band 24V POE Wireless Outdoor AP
(GZ-AP1200F)



	AP mode: The device covers the wireless network signal to other clients and devices, and uses Ethernet to connect to other routers to access the WAN
Wireless function	SSID broadcast
	SSID : 4 (2.4GHz) +4 (5GHz) , support english SSID
	Hide the SSID function
	Wireless encryption: : OPEN、 WPA/WPA2PSK-TKIPAES、 WPA3PSK-TKIPAES
	Wireless MAC address filtering : Support whitelist
	Spectrum navigation (5G first)
	WiFi Timed shutdown function
	User isolation: isolation between wireless networks and internal aps
	Transmit power setting
	Limit the number of wireless clients
	QoS : WMM
Network function	Connection mode: Static address, which can be obtained from the management server or gateway
	DHCP Server : You can use an internal DHCP server or an external DHCP server.
	Cloud platform server
	Firewall function
	PPPOE function : Supports PPPOE dial-up
Device manager	Backup configuration information
	Restore configuration information
	Factory data reset
	Restart includes scheduled restart and immediate restart
	Firmware Upgrade
	Time management includes system time display and time synchronization
	System log
	Fat and Fit AP switch function

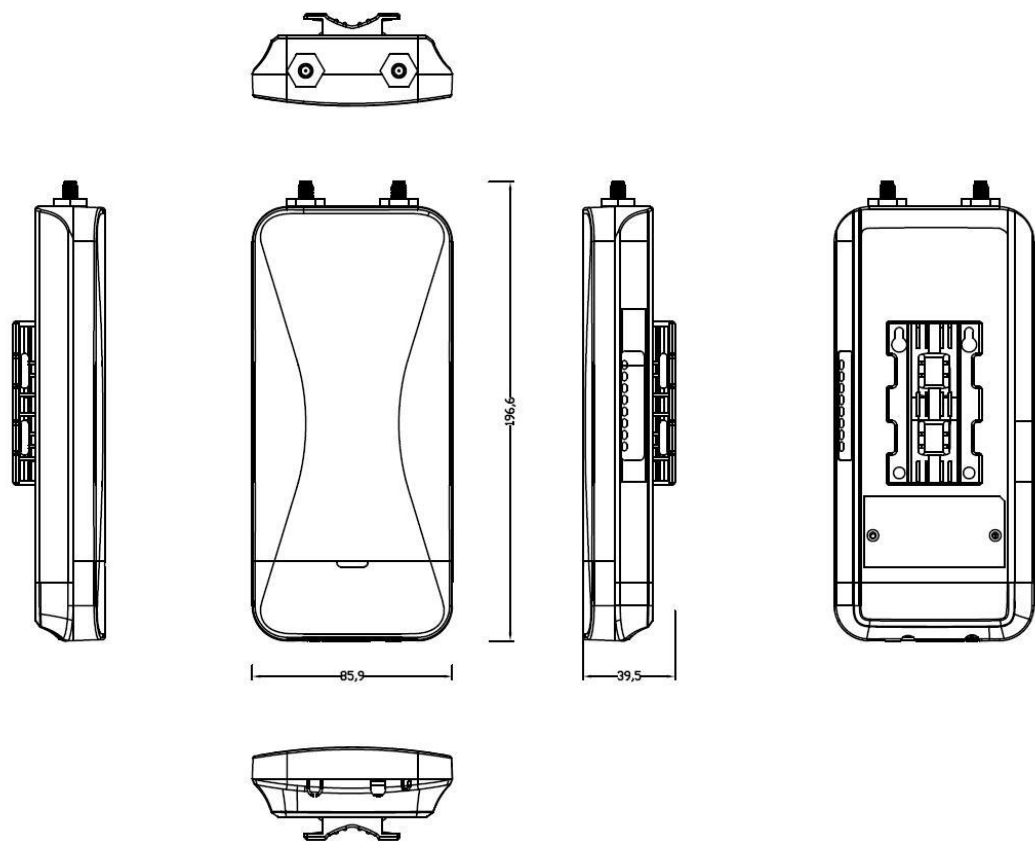
Connector Map



Package :

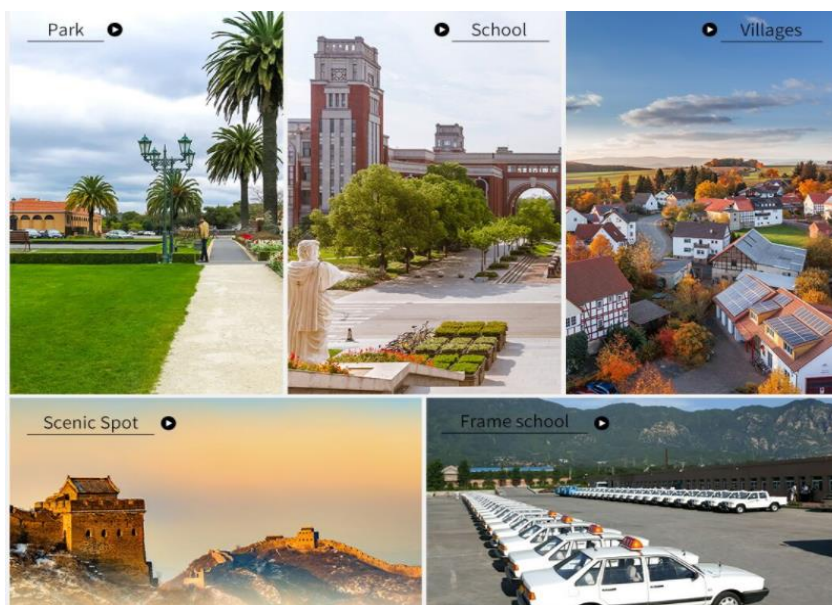
GZ-AP1200F	1
LAN cable	1
Installation Accessory	1
DC/POE Adapter	1 （optional with extra cost）

Product Picture



Applications

WiFi 5 11ac 1200Mbps Dual band 24V POE Wireless Outdoor AP (GZ-AP1200F)



GZCOM reserves the right to make changes to the products or information contained herein without notice. No liability is assumed as a result of their use or application. No rights under any patent accompany the sale of any such products or information.

Published by Shenzhen GZCOM Communication Co., Ltd.

Copyright ©GZCOM

All Rights Reserved